

NEWCASTLE UNIVERSITY Orientation



From our University. For the world.

Introduction

Welcome to Newcastle University! In this presentation, we're aiming to provide key information about studying here at Newcastle.

We will cover...



Getting
around



Key
facilities



Student
services



Communications



Academic
life



Student
life

Getting Around



You can access the campus map on the Student Portal. It's a great way to find where your classrooms are located.

For a more detailed map with information about study spaces, water points and prayer spaces, go to this website:

https://www.ncl.ac.uk/students/campus_map/

Student Portal

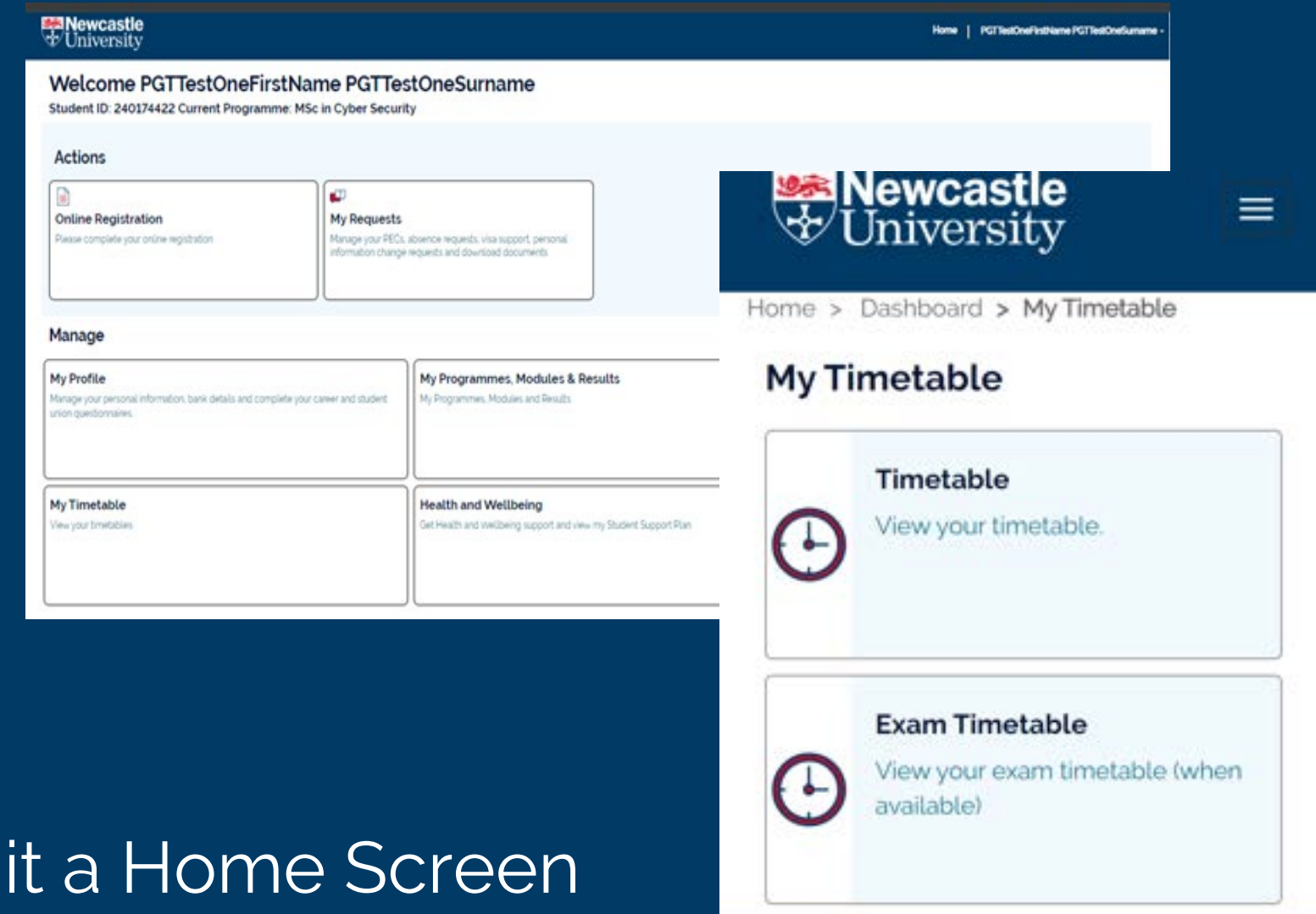
The Student Portal holds key information you'll need whilst studying at Newcastle University.

On the Portal, you can:

- View and select your module choices
- Submit a Personal Extenuating Circumstances (PEC) request
- Submit an absence request
- View your timetable and exam timetable
- View the campus map
- And much more!

To easily access the Student Portal, you can make it a Home Screen shortcut on your phone, desktop or laptop.

<https://studentportal.ncl.ac.uk/>



Key Facilities

There are a few key locations that everyone should know about during their time at Newcastle University.



Great North House



University Libraries



Sports Centre



Students' Union

Key Facilities

There are a few key locations that all students will need to know about during their time at Newcastle University.



Great North House



University Libraries



Sports Centre



Students' Union

Student services

What are student services?

Student Services can provide information and support for a range of concerns. Their services aim to be friendly, safe and accessible.

What do they do?

Student Services will work with you to discuss problems and possible solutions. They can give advice and / or signpost you to other relevant support.

How can I access them?

Great North House is the key location for Student Services. The Level 1 Helpdesk is the first point of call for all student services needs. You can also seek support from the Student Advice Centre in the Students' Union or online, all of which is free of charge.



FINANCE

Funding, budget planning, support for those experiencing financial difficulties, etc.

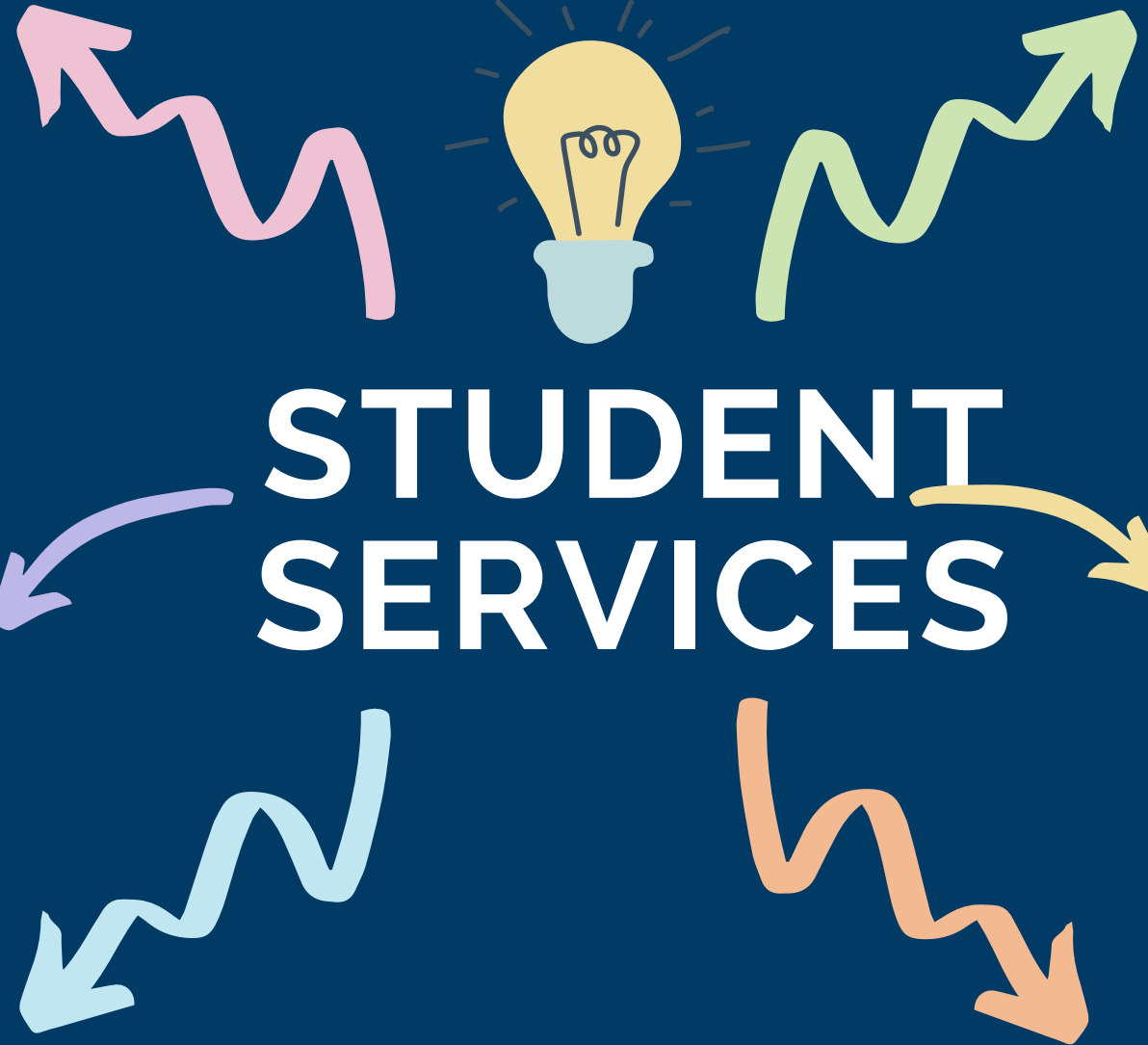
ACADEMIC

Study support, university registration, changes of study circumstances, etc.

WELLBEING

Support focused on your mental health, including counselling, tips for managing stress, etc.

For support with any of these, visit the Level 1 Helpdesk in Great North House.



You can find more information about student services here:
<https://www.ncl.ac.uk/studentservices/>

CAREERS

Discuss employers, advice for your next steps, improving your CV, advice on starting your own business, etc.

VISA

Guidance and renewal, immigration rules, working in the UK after graduating, etc.

AND MORE!

Language Resource Centre, computing and IT, the chaplaincy, accommodation, etc.

Further Support

For student parents and carers

Financial:

Many forms of financial support including bursaries and grants are available.

<https://www.ncl.ac.uk/student-financial-support/students-with-dependants/>

Wellbeing:

Wellbeing and community-based support are also a great way of feeling connected with other parents/carers.

The NU Parents Network supports staff and Postgraduate student parents through social activities and information sessions to connect parents within the University.

<https://www.ncl.ac.uk/vacancies/working-for-us/colleague-networks/>

Newcastle Council also provide guidance on childcare and family support here:

<https://www.newcastlesupportdirectory.org.uk/>

Adult dependants	
Adult Dependants' Grant (ADG)	▼
Support for parents	
Parents' Learning Allowance (PLA)	▼
Childcare Grant (CCG)	▼
UK Undergraduate Student Parent Bursary	▼
Free childcare and education for two to four year olds	▼
Childcare provision and advice	▼

Further Support

Disability Support for International Students

Financial:

Disabled Students' Allowance:

- If you're on a UK Research and Innovation (UKRI) studentship, you're eligible to apply for a DSA.
- If you're not eligible for UKRI or other DSA funding, the university may be able to give you funding to cover your support needs.
- All disability support available can be found here: [Disability Support | Student Wellbeing | Newcastle University \(ncl.ac.uk\)](#)

Learning Adjustments:

- The University offers a range of adjustments for individuals with disabilities including teaching, examination and assessment adjustments.
- We can also create a Student Support Plan (SSP).

The library also offers various services:

<https://www.ncl.ac.uk/library/disability-support/>

Connect with other students with the Disability, Mental Health and Neurodiversity Society: [Newcastle University Students' Union \(nusu.co.uk\)](#)

We offer the following services and facilities for library users who require additional support:

- Accessible study rooms
- Alternative formats
- BeWell@NCL
- Book retrieval service
- Height adjustable desks
- Lockers
- University computer clusters

If you have specific individual needs, please contact [Library Help](#).

Find out how to use these services and facilities below.

Further Support

The EDI Toolkit

The Equality, Diversity and Inclusion Toolkit provides resources to create an inclusive campus and diverse world.

Information regarding: How to be an ally, what protected characteristics are and, current EDI projects of the University, set up to further support and empower marginalised groups.







<https://www.ncl.ac.uk/who-we-are/equality/>

Cost of Living

The university is aware of the increases in the cost of living in the UK and have an extensive amount of support and resources available to help students who may be struggling.

<https://www.ncl.ac.uk/students/cost-of-living-support/>

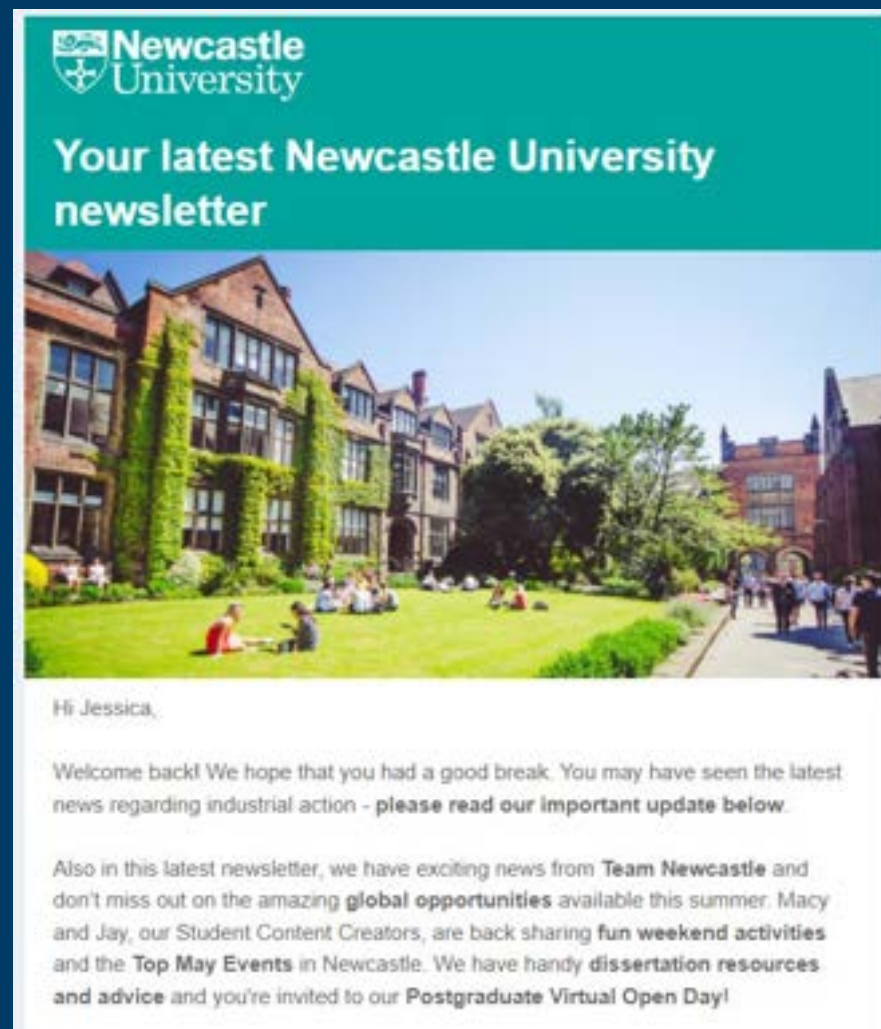
Our upcoming priorities and projects

 <p>Race equality > Newcastle University holds a Bronze Race Equality Charter (REC) Award. We were the only UK university to give Dr Martin Luther King Jr an honorary degree during his lifetime.</p>	 <p>Gender equality > Newcastle University are proud to be a member of the Athena Swan Charter and hold an Institution level Silver Athena Swan Award and 19 school level awards. We are dedicated to promoting gender equality across campus.</p>	 <p>Disability inclusion > Newcastle University is a member of the Business Disability Forum (BDF). We have set up a disability network so that colleagues and students can share experiences and influence policies and practices across our services.</p>
 <p>Faith, religion and belief > We welcome individuals of all faiths and are proud of our religious diversity. Get involved with one of our faith groups or find out about worship spaces on campus.</p>	 <p>Lesbian, gay, bisexual and transgender > As a Stonewall Global Diversity Champion, we are finding even more ways to ensure Newcastle University is lesbian, gay, bisexual, transgender and non-binary (LGBT+) inclusive.</p>	 <p>Family friendly and carers > Newcastle University aspires to be a family friendly centre of excellence providing the very best support to parents and carers.</p>

Financial Support	▼
Catering	▼
Resources	▼
Advice	▼
Utilities/Energy	▼
Transport	▼
Wellbeing Support	▼
Academic Support	▼
Careers Support	▼
Postgraduate Support	▼
Events	▼

Communications

Keeping up with information from the university will help you make the most of your time here - you should pay attention to the following:



The Student Newsletter

Student newsletters are sent to your university email address. They include important updates, signpost to key resources and highlight events taking place in Newcastle.

The newsletters are sent out on Thursdays, once every fortnight for undergraduates and postgraduate taught students. PGR students receive their own PGR newsletter on the last Thursday of every month.

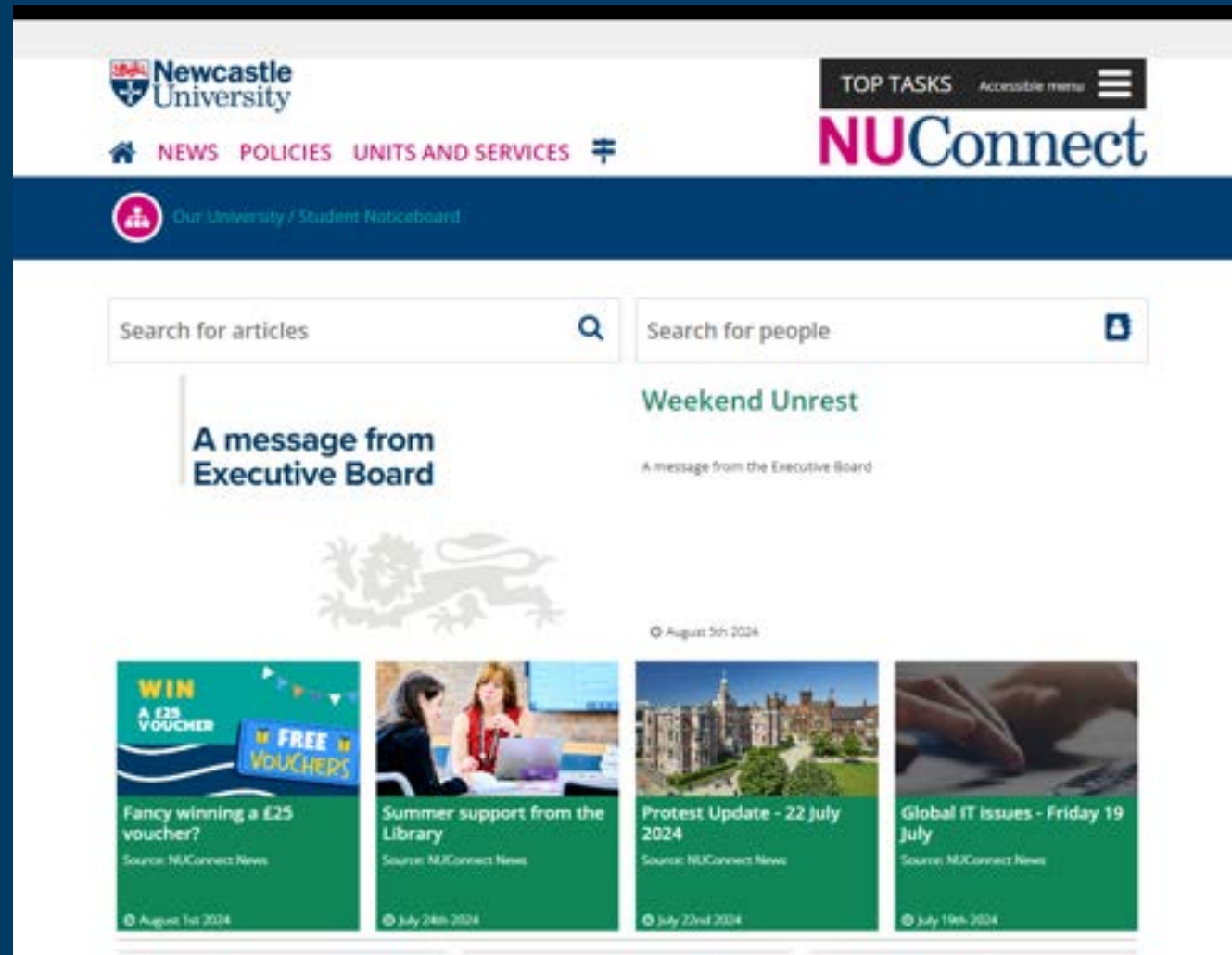
Communications

Keeping up with information from the university will help you make the most of your time here - you should pay attention to the following:

Student noticeboard

The noticeboard is an online hub for all university updates. You can find out about the latest updates, events and opportunities from across our services and facilities.

Make sure to bookmark and check the page regularly.



Communications

Keeping up with information from the university will help you make the most of your time here - you should pay attention to the following:

Academic communications

In induction week, you may have found out the means of communication that your programme prefers. This will ensure you're kept up to date for your studies.

If you aren't sure, check with staff/module leaders if you'll receive information through your student email address, Canvas pages, Microsoft Teams or other services.



Even if you've studied at a college or university before coming to Newcastle University, you might find that we do things differently - here are some top things to know!

Personal tutor: A member of academic staff assigned to you. They will be your first point of contact for any questions you have.

Peer mentor: For undergraduate students. A peer mentor is a student in a later stage of your degree program who will provide advice in your first year.

School office: The administrative centre of your School. The staff here may be able to help you with administrative questions.

Induction: 'Induction' is the information and meetings at the beginning of the year to prepare you for your studies going forward.

Understanding Academic Culture

A collection of resources and practical advice to help you understand academic culture in the UK

For more definitions and in-depth explanations of UK university culture, go to the Understanding Academic Culture page of the Academic Skills Kit.

These resources cover topics such as studying in English, developing skills such as critical thinking and managing assessments.

<https://www.ncl.ac.uk/academic-skills-kit/collections/academic-culture-uk/>



Building your own understanding >

Studying at Newcastle University gives you opportunities to take control of your own academic development.



Thinking and writing critically >

Students are expected to think and write 'critically'. But what does this mean, and how can you do it?



Studying in English >

Studying in a second language brings many opportunities, but sometimes it can be challenging, too.



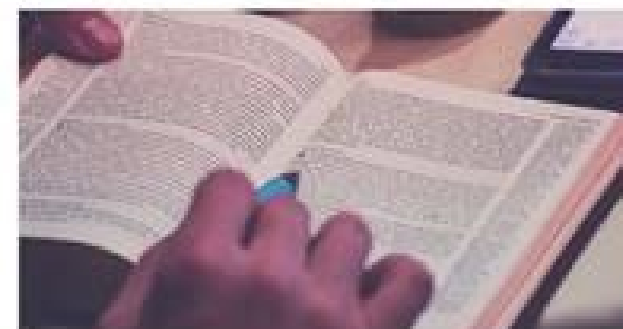
Completing assessments >

The University assesses students' learning in various ways. This mixture of assessment styles is designed to develop and test a range of your skills.



Managing your studies >

Students are expected to take responsibility for their studies. This means managing your own commitments and engagement to make sure you get what you want from your time at university.



Using other scholars' work >

Engaging with other scholars' work is one of the most important and rewarding aspects of studying at university. However, you need to make sure you always use scholarship honestly and properly.



Learning collaboratively >

Your tutors are not the only people you can learn from. You can also learn a lot from other students.



Interacting with others at university >

The University is a place where everyone has the right to be treated respectfully and equally.



Academic Skills Podcast >

Listen to a range of students share their experience of assessments, critical thinking and more.

From our University. For the world.

Academic Life

Digital/online resources are used extensively. You should familiarize yourself with Canvas, the university's virtual learning environment. Canvas is where you can expect to find your course content, study materials, and module and programme information.



For more information about Canvas, look through the Academic Skills Kit! This page includes a useful video and other resources.

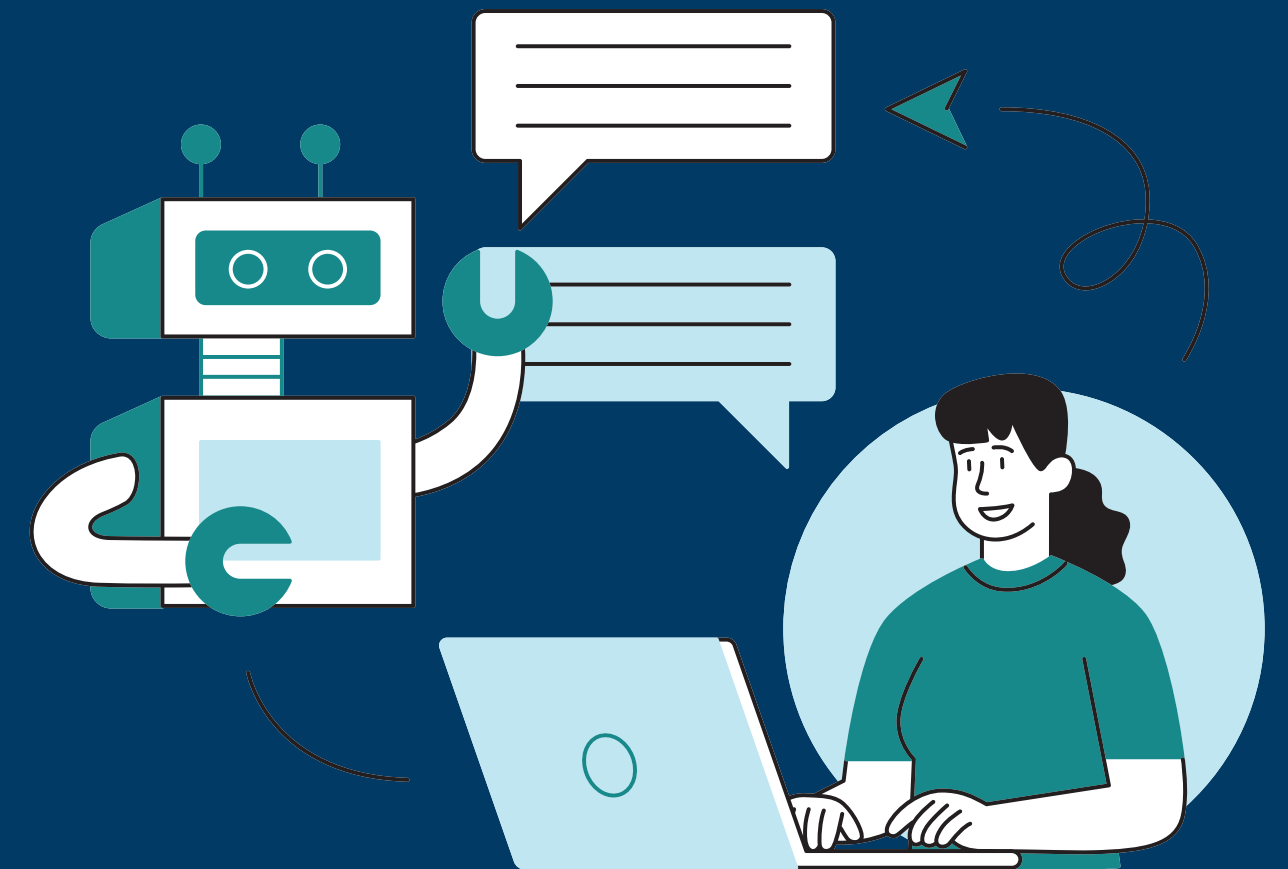
<https://www.ncl.ac.uk/academic-skills-kit/information-and-digital-skills/canvas/>

Academic Life

It's important to mention Artificial Intelligence (AI) when discussing the online aspects of your education, especially as AI technology such as ChatGPT are becoming increasingly well-known.

Before using any kind of AI, read through the university's guidance. This will teach you how to use this tool responsibly and avoid having your assessments be classed as plagiarised.

<https://www.ncl.ac.uk/academic-skills-kit/good-academic-practice/artificial-intelligence/>



Study Spaces

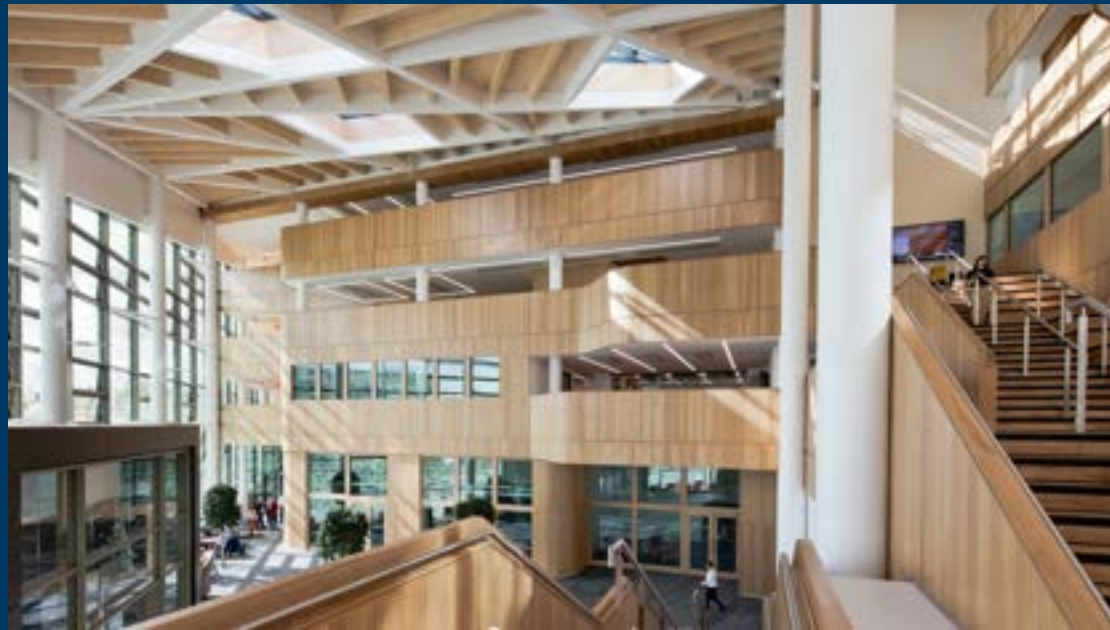
- The Philip Robinson Library ('the Robbo') - main campus library for all subjects except medicine and law. Open 24 hours during term time.
- The Marjorie Robinson Library Rooms ('the Marj') - large amounts of study spaces for silent and collaborative work.
- The Walton Library - located 5th floor of the Medical School. It has resources for students of Medicine, Dentistry, Psychology and Biomedical Sciences.
- The Law Library - located in Newcastle Law School and contains resources specifically for law students.



Study Spaces

As well as the main libraries, you can find study spaces and computer clusters in many of the university buildings and in the Students' Union. And, if you're tired of being on campus, there are plenty of cafes nearby too!

Urban Science Building



Dame Margret Barbour Building



Black Sheep Coffee,
Grainger Street



Food on campus



If you need somewhere to eat while on campus, Newcastle University has plenty of options!

CHICKEN SHACK

Hadrian Building

COURTYARD

Old Library Building

DAYSH CAFE

Henry Daysh Building

SHIJO

NUSU

DOMINO'S

NUSU

KIMCHI PLANET

NUSU

WETHERSPOONS

NUSU

THE GRAND

King's Walk

BITES

Dental School

FREDERICK DOUGLASS CAFE

Frederick Douglass Building

URBAN CAFE

Urban Sciences Building

BUSINESS SCHOOL CAFE

Business School Atrium

PHILIP ROBINSON CAFE

Philip Robinson Library

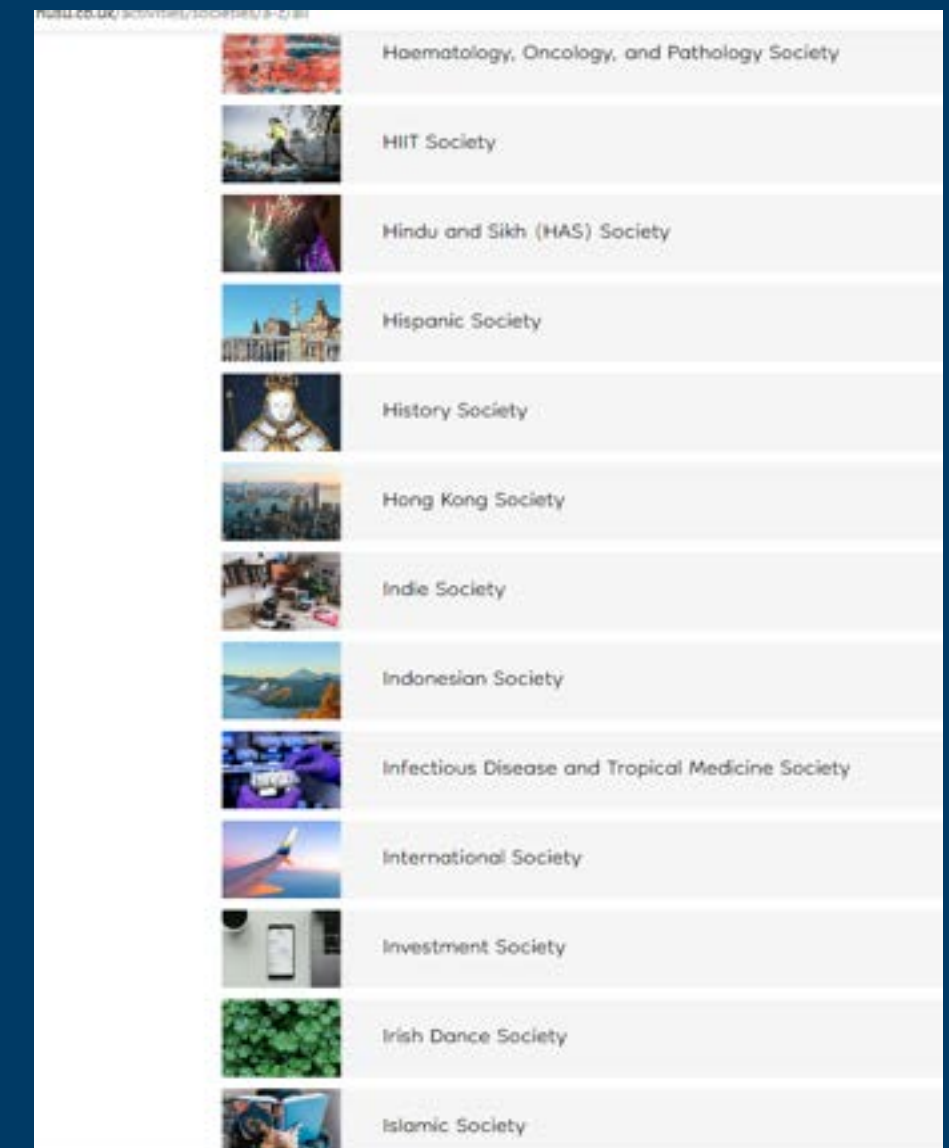
SPORTS CENTRE CAFE

Sports Centre

There's so much more to university life than just your lectures. Here at Newcastle, we have many opportunities for students to get involved with outside of their studies.

Societies

- Newcastle is home to over 160 student-led societies, meaning there really is something for everyone.
- There are societies related to hobbies, academic courses, cultural groups and more.
- You will be able to chat to these groups at the Clubs and Societies fair in Freshers' Week!

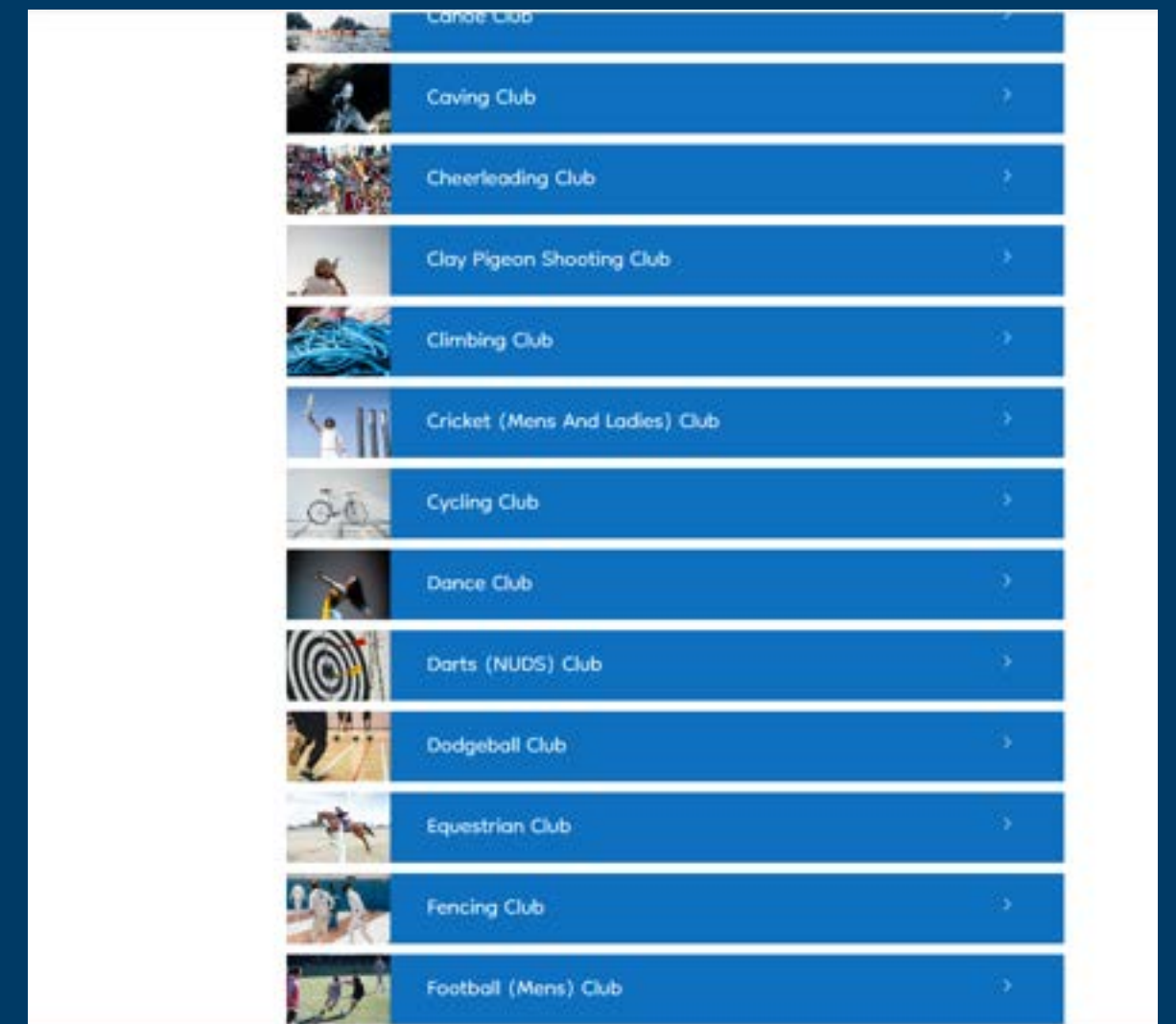


There's so much more to university life than just your lectures. Here at Newcastle, we have many opportunities for students to get involved with outside of their studies.

SPORTS CLUBS

There are over 60 different sports clubs at Newcastle University, with many offering the chance to compete up to BUCS (British Universities and Colleges Sport), national and international levels!

If you want to get involved more casually, look out for intermural teams or join a gym class at the Sports Centre.



Student Life

There's so much more to university life than just your lectures. Here at Newcastle, we have many opportunities for students to get involved with outside of their studies.

GO VOLUNTEER

'Go Volunteer' oversees many different volunteering projects, both within the university and in the wider community. You can join a one-off event to help-out or sign up to volunteer frequently at long-term projects such as N.E.S.T!

Volunteering is a great way to help others, meet new people and gain new skills.



Student Life

There's so much more to university life than just your lectures. Here at Newcastle, we have many opportunities for students to get involved with outside of their studies.

Student Media

Student Newspaper: The Courier

Opportunities to work on articles surrounding world news, sports, arts and much more.

Student Radio: NSR

Host your own live radio show or podcast from NUSU's radio station.

TV Broadcasting: NUTV

Work in front of the camera or behind the scenes producing broadcast shows.

Famously known for covering Fight Night broadcasting!



Student Life

There's so much more to university life than just your lectures. Here at Newcastle, we have many opportunities for students to get involved with outside of their studies.

GIVE IT A GO

Give It A Go is NUSU's activities programme for all students and staff.

It encourages you to try something new with activities including day trips, arts and crafts, sports, game nights and so much more.

You can meet some of the friendly GIAG team at the International Welcome social event!



From our University. For the world.

Student Life

Getting involved in student life isn't just a great way to meet new people and gain new skills - you can participate in schemes like the NCL+ Award or even be nominated for a 'Celebrating Success' or 'Pride of Newcastle' award at the end of the year.



Any questions?



From our University. For the world.